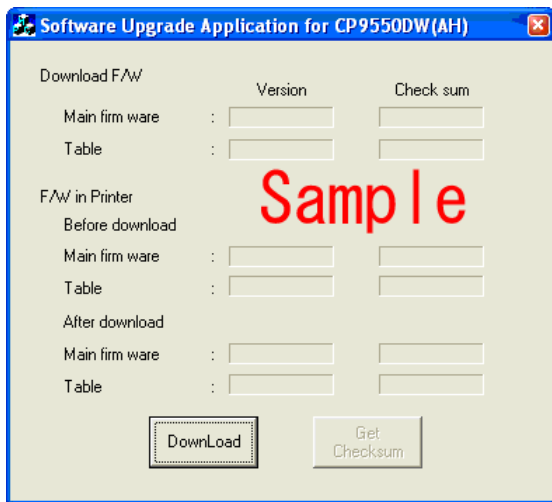


Firmware Download Procedure

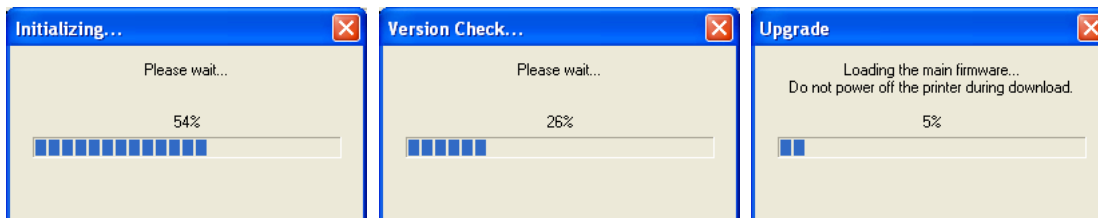
This program is to upgrade the firmware of the printer.

**Note: Do not disconnect the USB cable during firmware download.
Do not turn-off the power of printer during firmware download.**

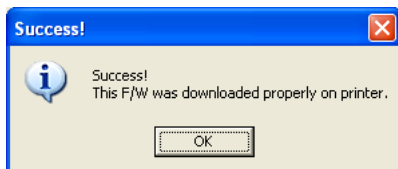
- (1) Connect your printer with PC. If two or more printer are connected with PC, power off the printer(s) except the target printer. Make sure, in the device manager, that USB port for the printer is “USB Printing support”, not “MITSUBISHI USB Port”.
- (2) Run the Exe.file and click “Download” in the main dialog as shown below.



- (3) While downloading, the progress indicator appears. Ensure to keep power supply and USB cable to the printer connected



- (4) When the download is successfully completed, the following dialog appears. Click “OK “.



- (5) In the main dialog, the firmware version and its check sum are indicated.

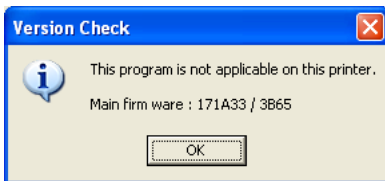
Click “X” at top right of the dialog to end program.

(6) In the case the download is failed, following dialog will appear.

Turn off and on the power of the printer, and try again from the first step of this procedure.



(7) In the case the firmware upgrade with this program is not applicable to a connected printer, or the firmware upgrade is not necessary for a connected printer, following dialog will appear.



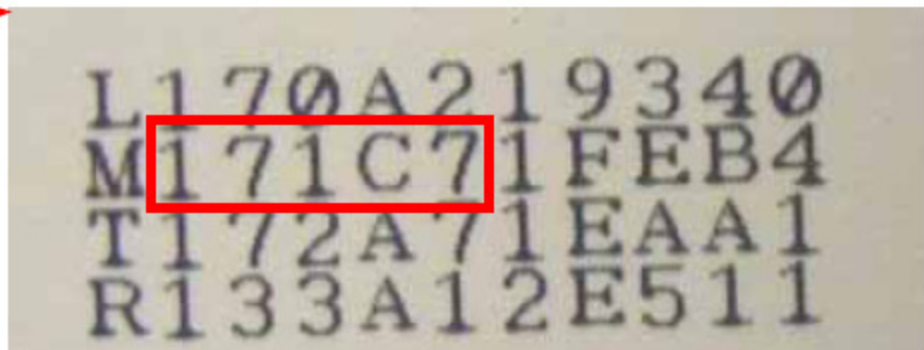
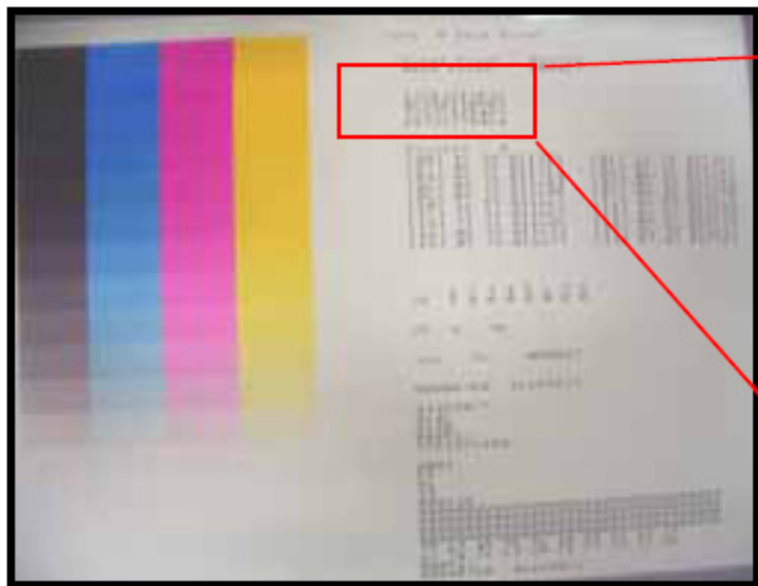
* A installed firmware version in a connected printer is indicated in the dialog.

Prohibition matter

Reverse Engineering, decompiling or reverse assembling of this software is prohibited.

End

4. Confirmation of firmware



Five digits of the line that starts by alphabet are FW versions.

It becomes 171C7 in the example above.